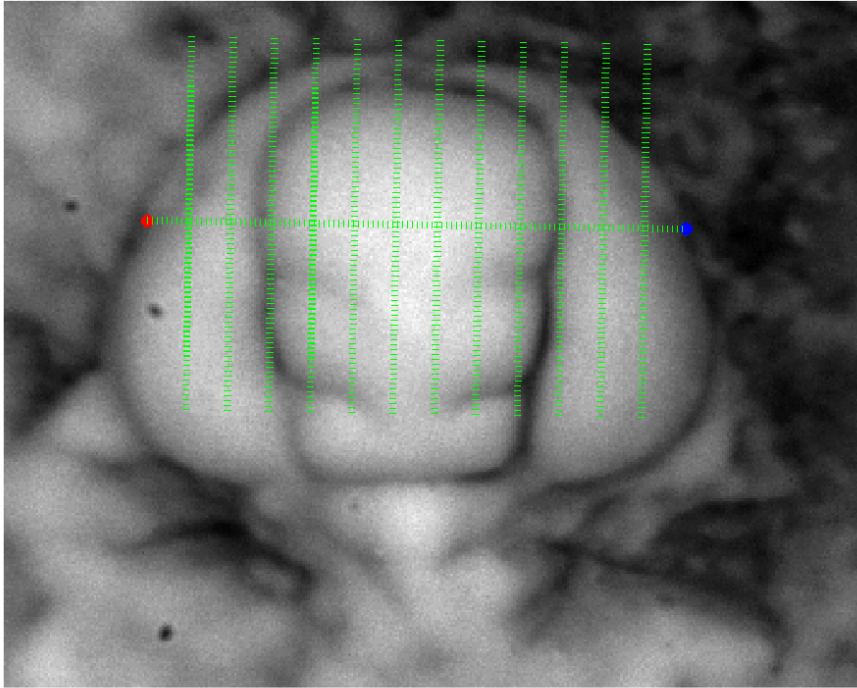


A New feature: The Comb



A *comb* is a straight line between two markers, with lines drawn perpendicular to it, and evenly spaced along the original center line running between the two markers. To create a comb, place markers 1 and 2 on the image, and set the number of bars in the comb using the “# of lines” box on the control panel. The exaggeration box controls the length of the bars. The length of the bars is the length of the center line times the exaggeration value.

The comb feature was added January 14, 2003 at the suggestion of Laura Eidietus, Univ. of Michigan.
Thanks!